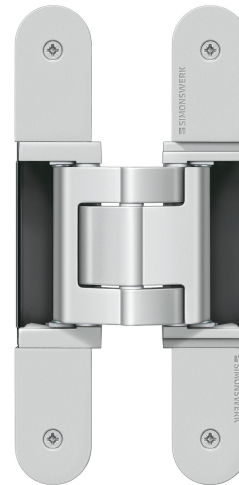


TE 540 3D A8

for unrebated heavy-duty doors with claddings up to 8 mm on both sides



Product features

- cladding up to 8 mm
- completely concealed hinge system
- for timber, steel or aluminium frames
- for unrebated heavy-duty doors
- sideways closed hinge body for a homogeneous mortise appearance
- with comfortable 3D adjustment (side +/- 3,0 mm, height +/- 3,0 mm, compression +/- 1,0 mm)
- maintenance-free slide bearings

Technical details

Attributes	Value
Load capacity	100,0 kg
Overall length	200,0 mm
Width (door part)	32,0/37,0 mm
Width (frame part)	32,0/37,0 mm
Cutter diameter	24,0 mm
Opening angle	180°

Note

Quality marks



Certification CE



Certification IFT



Certification UL



Warringtonfire

Classification key

4	7	5	1 ^{*1}	1	— ^{*2}	1	12
---	---	---	-----------------	---	-----------------	---	----

*1 Test evidence for functional doors to be achieved with full door sets and assemblies.

*2 depending on the finish

TECTUS - TE 540 3D A8

The load capacity mentioned above refers to the use of 2 hinges per door leaf (1 x 2 m), for detailed information please look at the chapter "technical information".

With an opening position of 180° the door may have to be fixed additionally.

Suitable for

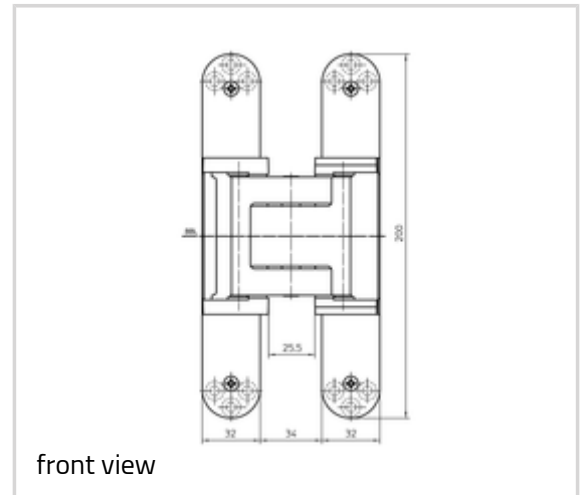
Universal milling frame

Template 5 250680 5 step 1

Template 5 250681 5 step 2

Template 5 250682 5 step 3

Template 5 250687 5 step 3 (without cladding)



front view

Combinations

TE 540 3D FZ

TE 540 3D A8 SZ

TE 540 3D ST

Cover plate set TECTUS A8 radius

Function range



burglar resistance



fire resistance



smoke resistance



soundproof

Item

Finish(es)	030-polished brassed
OF-NR.	030
VPE	pack of 2
DIN	DIN right and left hand
Item No.	5 400695 0 03002
EAN	4015471126513
Finish(es)	038-polished nickelled

TECTUS - TE 540 3D A8

OF-NR.	038
VPE	pack of 2
DIN	DIN right and left hand
Item No.	5 400695 0 03802
EAN	4015471127329
Finish(es)	124-Satin Chrome Look (F1)
OF-NR.	124
VPE	pack of 2
DIN	DIN right and left hand
Item No.	5 400695 0 12402
EAN	4015471128272
Finish(es)	125-Satin Nickel Look (F2)
OF-NR.	125
VPE	pack of 2
DIN	DIN right and left hand
Item No.	5 400695 0 12502
EAN	4015471128289
Finish(es)	126-Stainless Steel Look (SSL)
OF-NR.	126
VPE	pack of 2
DIN	DIN right and left hand
Item No.	5 400695 0 12602
EAN	4015471128319
Finish(es)	174-Bronze Finish
OF-NR.	174
VPE	pack of 2
DIN	DIN right and left hand
Item No.	5 400695 0 17402
EAN	4015471128425
Finish(es)	175-Bronze Finish light
OF-NR.	175
VPE	pack of 2
DIN	DIN right and left hand
Item No.	5 400695 0 17502
EAN	4015471128432
Finish(es)	176-Bronze Finish dark
OF-NR.	176

TECTUS - TE 540 3D A8

VPE	pack of 2
DIN	DIN right and left hand
Item No.	5 400695 0 17602
EAN	4015471128449

Finish(es)	079-coloured
OF-NR.	079
VPE	EUR-pallet
DIN	DIN right and left hand
Item No.	5 400695 0 07975
EAN	4015471128241