

It all hinges on excellence.

**SIMONSWERK**



# **TECTUS Glass**

Flush glass doors in the limelight

# Content

## TECTUS Glass – the hinge system for glass doors

---

			<b>Models from 60 to 80 kg</b>
12	<b>TEG 310 2D 60</b>	60 kg	For flush glass doors made of ESG 8–10 mm
13	<b>TEG 310 2D 80</b>	80 kg	For flush glass doors made of ESG 8–10 mm

---

			<b>Fastenings and receivers</b>
14	<b>TE 340 3D FZ</b>		Fixing plate for glass doors with casing frames
15	<b>TEG 310 2D SZ</b>		Receiver for glass doors with steel frames

---

## KEEP CLOSED – the latching system for glass and timber doors

---

			<b>KCH – KEEP CLOSED Handle</b>
16	<b>KCH 1700</b>		Handle for glass and timber doors

---

			<b>KCM – KEEP CLOSED Magnet</b>
			<b>Closing magnets</b>
17	<b>KCM 50</b>		Closing magnet for a contactless and silent closing process of glass and timber doors
18	<b>KCM 50/50</b>		Two coordinated closing magnets for an improved contactless and silent closing process of timber doors
			<b>Magnetic plates</b>
19	<b>KCM 50/G</b>		Magnetic plate for glass doors
20	<b>KCM 50/H</b>		Magnetic plate for rebated and unrebated timber doors on block frames
21	<b>KCM 50/H FZ</b>		Magnetic plate for rebated and unrebated timber doors with casing frames

---

			<b>Fastenings</b>
22	<b>KCM 50 FZ</b>		Fixing plate for closing magnet on casing frames

---

			<b>Accessories</b>
23	<b>KCM 01</b>		Locking system for the passive leaf of glass doors with floor socket and stop at the active leaf
23	<b>Adhesive kit KCM</b>		For use with KCM 50/G
23	<b>Cleaning cloth</b>		For cleaning adhesive and clamping surfaces

---

25	<b>Assembly</b>		
----	-----------------	--	--

---

27	Service		
----	---------	--	--

---

## TECTUS Glass – maximum transparency and functionality

With the TECTUS Glass hardware system, SIMONSWERK has developed an attractive and functional all-round solution for the flush installation of glass doors. Glass door leaf, frame, hinge and latching system all lie in the same plane – the best prerequisite for minimalist design combined with maximum transparency. It means that generous glazing, used for example in offices or private homes to provide acoustic protection while offering a full view in and through, can maintain their aesthetic quality.



# TECTUS Glass – flush hardware system for glass doors

## The TECTUS Glass hardware system

The flush surface of the glass door leaf, frame, hinge and latching system create the perfect aesthetic design. The entire door displays a clear and consistent design. The TECTUS Glass full door hardware system – consisting of the TECTUS hinge system, the contactless and silent magnetic closure and coordinated, attractively shaped handle variants – enables the realisation of contemporary interior design concepts.

## The hinge system

The TEG 310 2D hinge system gives glass doors an unprecedented transparency and lightness. And its delicate appearance does not rule out a high load capacity. Its unique material components and clamping technique mean that the hinge system can support up to 80 kg per pair and guarantees a perfect door fit that's made to last.

## The magnetic closure

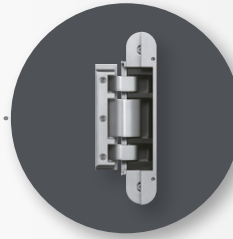
The KCM 50 closing magnet paired with the KCM 50/G magnetic plate on the door itself make sure the door closes silently and without contact in a process that can be individually tailored to produce the desired closing behaviour.

## The handles

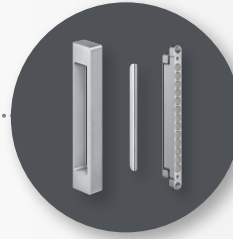
The handle variants are matched in shape and colour to the hinge system TECTUS Glass and are ergonomically designed for comfortable handling.

## Product features

- glass door leaf, frame, hinge and latching system all lie in the same plane
- interior fittings for high-quality residential and commercial projects
- load capacity of up to 80 kg for dimensions of approx. 10 x 1300 x 2500 mm
- for timber, steel and aluminium frames
- opening angle up to 180°



**The hinge system TECTUS Glass** enables the flush installation of door and frame



**The KEEP CLOSED magnetic latching system** ensures maximum transparency with its reduced components.

**The TECTUS Glass hardware system**



**Hinge system**  
TEG 310 2D



**Handle**  
KCH 1700



**Magnetic plate**  
KCM 50/G



**Closing magnet**  
KCM 50

# TECTUS Glass – elegant details and technical Precision

## The hinge system TEG 310 2D

Minimalist hinge dimensions ensure maximum transparency for glass doors – at the same time as providing a load capacity of up to 80 kg per pair. This corresponds to a glass door with dimensions of approx. 10 x 1300 x 2500 mm. The TECTUS Glass hinge system can be used for ESG glass thicknesses of 8–10 mm. Since no glass machining is required on the door when using TECTUS Glass, the glass doors can be used both right/left and top/bottom.

## The hinge body

The cast stainless steel receiver supports the door leaf and ensures the glass pane sits perfectly and securely in place. The solid hinge kinematics ensure reliable and durable functionality. This has been tested in performance tests by IFT Rosenheim, Germany. The correct door position is easily and flexibly set thanks to the floating clamping mechanism. It is then fastened securely in place by tightening the clamping screws. In addition to this, the lateral adjustment in the hinge is easy to regulate to ensure uniform clearance to the frame.

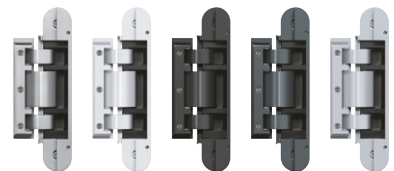
## Product features

- load capacity of up to 80 kg
- stable hinge kinematics
- hinge body made of die cast stainless steel
- tested suitability for heavy-duty use
- quick and easy installation with no glass machining
- performance tested by IFT, Rosenheim

## Available options

- Load capacity up to 60 kg:  
TEG 310 2D 60
- Load capacity up to 80 kg:  
TEG 310 2D 80

## Finish options – hinge system



For details see product pages



Hinge system TEG 310 2D – closed



**TEG 310 2D**  
up to 80 kg

# KEEP CLOSED – elegant closure components complete the hardware system

## The magnetic latching system

KEEP CLOSED, the innovative, zero-current magnetic closure from SIMONSWERK, offers an intelligent alternative to a conventional latching mechanism. Comprising of a closing magnet, magnetic plate, and coordinating handle, this impressive hardware system with its minimalist design also offers exceptional ease of use.

## The closing magnet

The KCM 50 closing magnet in the frame works silently and without contact or current. The durable, reliable closure can be customised to satisfy individual requirements

## The magnetic plate

The KCM 50/G magnetic plate is permanently bonded to the main closing edge of the glass door, where it is barely visible.

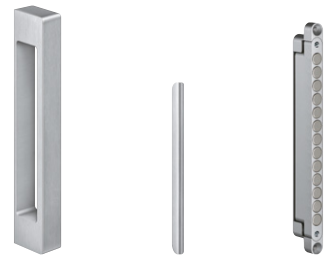
## The handle

The KCH 1700 handle adds the perfect finishing touch to the appearance of the glass door. The handle is attached simply and securely by means of a positioning template and the adhesive strip already on the handle, so no glass machining is required.

## Product features

- silent, contactless, zero current
- permanently wear-free function
- quick and easy installation with no glass machining
- choice of handles finishes matched to the hinge system

## Magnetic closure



**Handle**  
KCH 1700

**Magnetic plate**  
KCM 50/G

**Closing magnet**  
KCM 50

## Available finishes – handle



For details see product pages



Magnetic closure with handle options



**The closing magnet**

KCM 50

**The magnetic plate**

KCM 50/G

**The handle**

KCH 1700



## KEEP CLOSED – for timber interior doors

SIMONSWERK developed its magnetic closure with the specifications for use with timber interior doors in mind. Current-free, silent, low wear and reliable, its technical features alone are impressive in every respect. But the most striking aspect of the magnetic closure is the unprecedented ease of use when opening and closing.

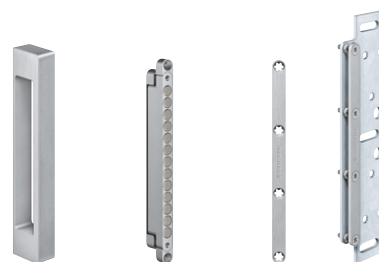
### Silent opening and closing

It has never been so easy to open and close timber interior doors without making a sound. Without the usual “push–pull–slide” motion, doors can be opened silently and ergonomically, with minimal effort, too. The door is held in the closed position without the need for direct contact with the patented closing magnet. The holding power can be individually adjusted and holds the door securely in its end position.

### Groundbreaking interaction

Combined with the KCM 50/H magnetic plate, the KCM 50 closing magnet is the perfect choice for timber block frames and casing frames and can be used with both rebated and flush doors. And multiple magnets can be used for extra-tall doors. The elegant KCH 1700 handle does not require the wood to be milled. The handle is attached simply, solidly and securely by means of a positioning template and the adhesive strip already on the handle.

### Magnetic latching system for timber doors



**Handle**  
KCH  
1700

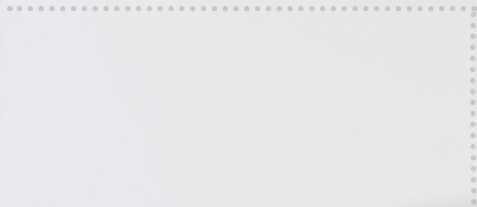
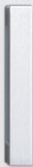
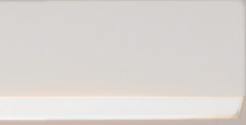
**Closing magnet**  
KCM 50

**Magnetic plate**  
KCM 50/H  
and  
KCM 50/H FZ

### Available finishes – handle



For details see product pages



## TECTUS

### TEG 310 2D 60

for flush glass doors made of ESG 8–10 mm

hinge up to 60 kg

#### Product features

- for flush glass doors
- for ESG glass thicknesses 8–10 mm
- without drilling the door leaf
- for timber, steel and aluminium frames
- continuous side adjustment (+ 3.0/- 2.0 mm)
- continuous height adjustment with additional fine tune adjustment (+/- 1.0 mm)
- tested for interior rooms up to 50 °C ambient temperature
- maintenance-free slide bearings

#### Technical details

load capacity	<b>i</b> two hinges per door (1x2 m)	60.0 kg
overall length		160.0 mm
width (frame part)		28.0 mm
cutter diameter		24.0 mm
opening angle		180°
rebate width		11–15 mm

#### Finishes

Satin Stainless Steel (040), RAL 9016 Matte Traffic White (057), Matte Pure Grey/NCS S 8000-N (301), RAL 9005 Matte Black (107), Satin Chrome Look (F1) (124)

#### Combination

receiver	casing frame	TE 340 3D FZ
	steel frame	TEG 310 2D SZ

#### Installation tools

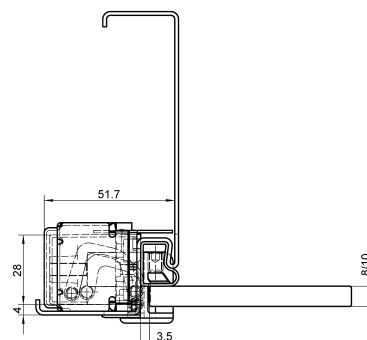
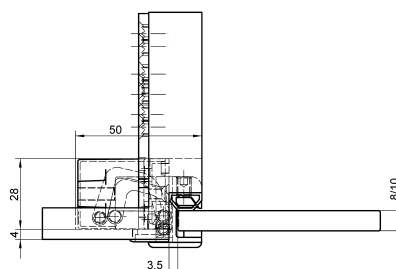
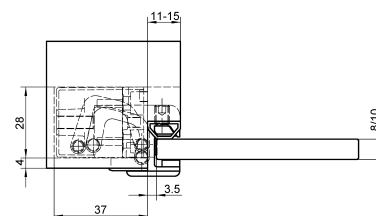
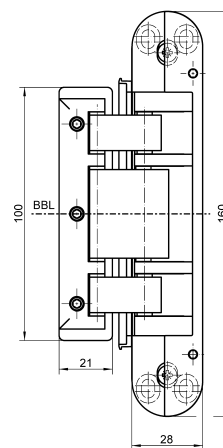
jig		universal milling frame
step 1	template	No. 5 251145 5
step 2	template	No. 5 251146 5
step 3	template	No. 5 251147 5

Detailed information in our PRODUCTSELECTOR at [www.simonswerk.com](http://www.simonswerk.com)

#### Note

**i** The load capacity mentioned above refers to the use of two hinges per door leaf (1x2 m).

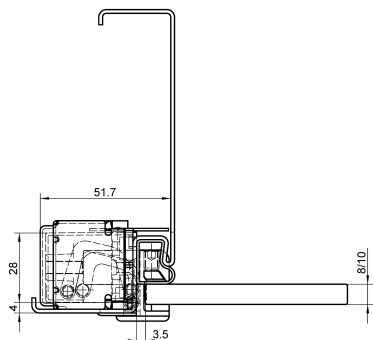
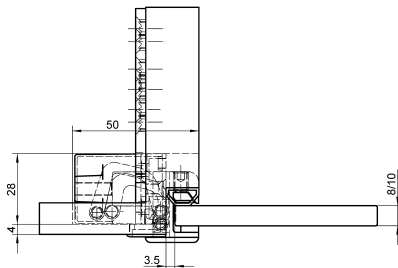
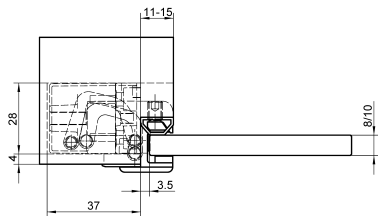
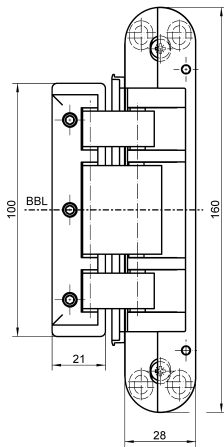
With an opening position of 180° the door may have to be fixed additionally.



# TECTUS

## TEG 310 2D 80

for flush glass doors made of ESG 8–10 mm



hinge		up to 80 kg
-------	--	-------------

### Product features

- for flush glass doors
- for ESG glass thicknesses 8–10 mm
- without drilling the door leaf
- for timber, steel and aluminium frames
- continuous side adjustment (+ 3.0/- 2.0 mm)
- continuous height adjustment with additional fine tune adjustment (+/- 1.0 mm)
- tested for interior rooms up to 50 °C ambient temperature
- maintenance-free slide bearings

### Technical details

load capacity	<b>i</b> two hinges per door (1x2 m)	80.0 kg
overall length		160.0 mm
width (frame part)		28.0 mm
cutter diameter		24.0 mm
opening angle		180°
rebate width		11–15 mm

### Finishes

Satin Stainless Steel (040), RAL 9016 Matte Traffic White (057), Matte Pure Grey/NCS S 8000-N (301), RAL 9005 Matte Black (107), Satin Chrome Look (F1) (124)

### Combination

receiver	casing frame	TE 340 3D FZ
	steel frame	TEG 310 2D SZ

### Installation tools

jig		universal milling frame
step 1	template	No. 5 251145 5
step 2	template	No. 5 251146 5
step 3	template	No. 5 251147 5

Detailed information in our PRODUCTSELECTOR at [www.simonswerk.com](http://www.simonswerk.com)

### Note

**i** The load capacity mentioned above refers to the use of two hinges per door leaf (1x2 m).

With an opening position of 180° the door may have to be fixed additionally.

# TECTUS

## Fixing plate TE 340 3D FZ

for unrebated residential and heavy-duty doors with casing frames

<b>receiver</b>		<b>casing frame</b>
-----------------	--	---------------------

**Finishes**

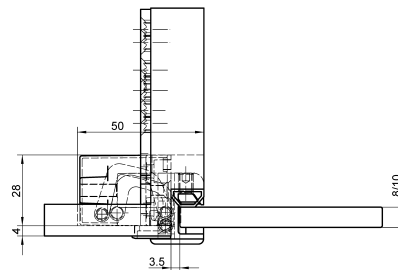
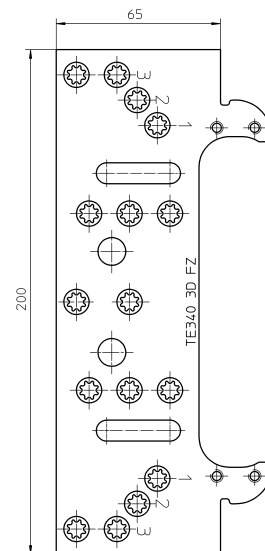
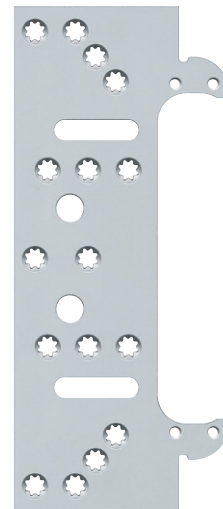
blue galvanized (010)

**Combination**

hinge	TEG 310 2D 60	
	TEG 310 2D 80	

**Note**

Delivery includes packers for casing thicknesses of 22–28 mm.



# TECTUS

## Receiver TEG 310 2D SZ

for glass doors with steel frames



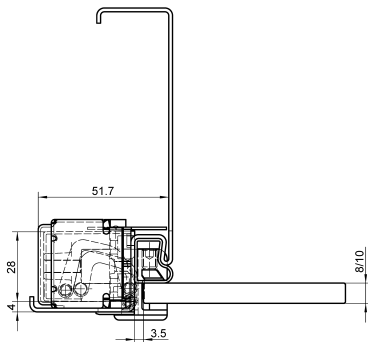
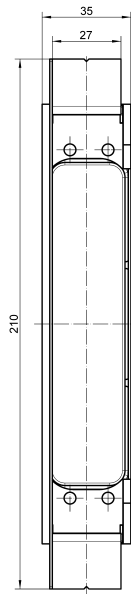
receiver		steel frame
----------	--	-------------

### Finishes

blue galvanized (010)

### Combination

hinge	TEG 310 2D 60
	TEG 310 2D 80



## TECTUS

---

### KCH 1700

handle for glass and timber doors

---

#### handle

---

#### Product features

- for glass and timber doors
- without drilling the door leaf
- self-adhesive fixing

---

#### Technical details

overall length	200.0 mm
overall width	26.0 mm
overall depth	40.0 mm

---

#### Finishes

Stainless Steel Effect (130)), RAL 9016 Matte Traffic White (057), Matte Pure Grey/NCS S 8000-N (301), RAL 9005 Matte Black (107), Satin Chrome Look (F1) (124)

---

#### Combination

magnetic closure	KCM 50
	KCM 50/50
	KCM 50/G
	KCM 50/H
	KCM 50/H FZ

---

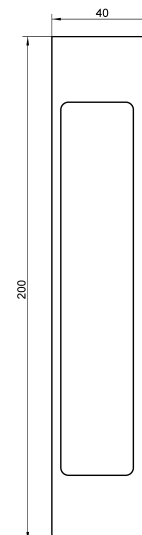
#### Note

Particularly suitable for use on glass doors in combination with TEG 310 2D.

Set consisting of 2 handles.

An adhesive tape for permanent fixing is applied at the factory.

Delivery includes a positioning template.





## TECTUS

### KCM 50

closing magnet for a contactless and silent closing process of glass and timber doors

**magnetic closure**

**closing magnet**

#### Product features

- continuous adjustable retention force up to 50 N
- for use in timber, steel and aluminium frames

#### Technical details

overall length	195.0 mm
overall width	13.0 mm
cutter diameter	12.0 mm

#### Finishes

Stainless Steel Effect (130)

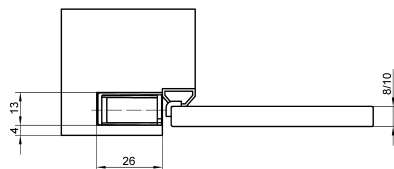
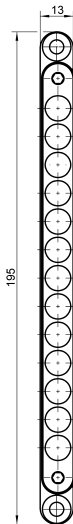
#### Combination

receiver	casing frame	KCM 50 FZ
magnetic closure		KCM 50/G
		KCM 50/H
		KCM 50/H FZ
handle		KCH 1700

#### Installation tools

jig		universal milling frame
step 1	template	No. 5 251148 5
step 2	template	No. 5 251149 5

Detailed information in our PRODUCTSELECTOR at [www.simonswerk.com](http://www.simonswerk.com)



## TECTUS

### KCM 50/50

two coordinated closing magnets for an improved contactless and silent closing process of timber doors

#### magnetic closure

#### closing magnet

#### Product features

- increased closing power means the two magnets can be further apart
- continuous adjustable retention force up to 120 N
- for use in timber, steel and aluminium frames

#### Technical details

overall length	195.0 mm
overall width	13.0 mm
cutter diameter	12.0 mm

#### Finishes

Stainless Steel Effect (130)

#### Combination

receiver	casing frame	KCM 50 FZ
handle		KCH 1700

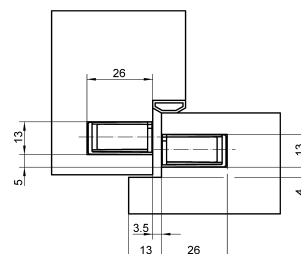
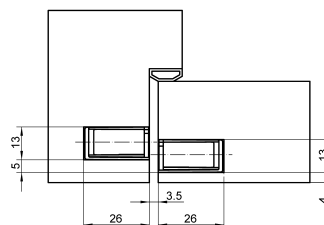
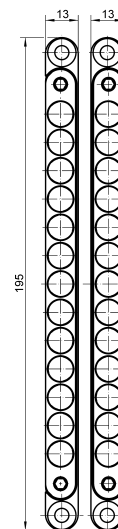
#### Installation tools

jig		universal milling frame
step 1	template	No. 5 251148 5
step 2	template	No. 5 251149 5

Detailed information in our PRODUCTSELECTOR at [www.simonswerk.com](http://www.simonswerk.com)

#### Note

The offset arrangement of the magnets provides the necessary seal pressure for the door.



## TECTUS

### KCM 50/G

magnetic plate for 8 mm and 10 mm glass doors

magnetic closure

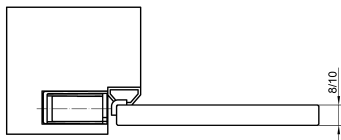
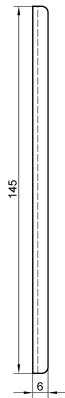
magnetic plate

#### Finishes

Satin Stainless Steel (040)

#### Combination

magnetic closure	KCM 50
handle	KCH 1700
accessories	adhesive kit KCM



## TECTUS

### KCM 50/H

magnetic plate for rebated and unrebated timber doors on block frames

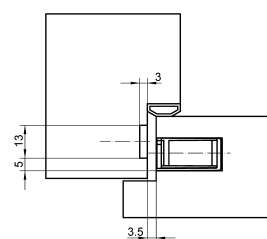
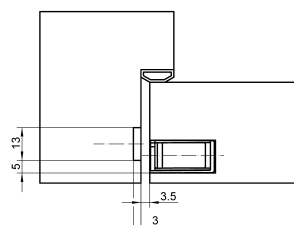
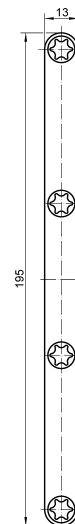
magnetic closure	block frame	magnetic plate
------------------	-------------	----------------

#### Finishes

Satin Stainless Steel (040)

#### Combination

magnetic closure	KCM 50
handle	KCH 1700



## TECTUS

### KCM 50/H FZ

magnetic plate for rebated and unrebated timber doors with casing frames



magnetic closure	casing frame	magnetic plate
------------------	--------------	----------------

#### Product features

- infinite adjustment for different casing frame constructions

#### Finishes

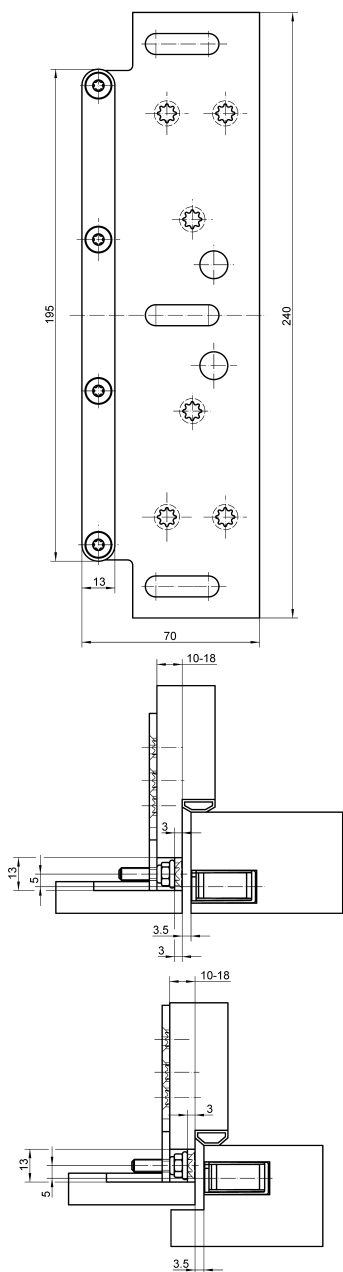
Satin Stainless Steel (040)

#### Combination

magnetic closure	KCM 50
handle	KCH 1700

#### Note

In order to prevent warpage of the frame by the magnetic force, a sufficient mechanical fixing must be provided.



# TECTUS

## KCM 50 FZ

fixing plate for closing magnet on casing frames

receiver		casing frame
----------	--	--------------

**Finishes**

blue galvanized (010)

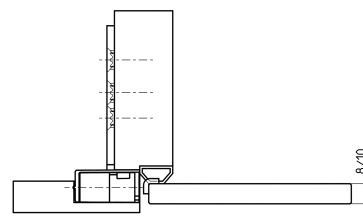
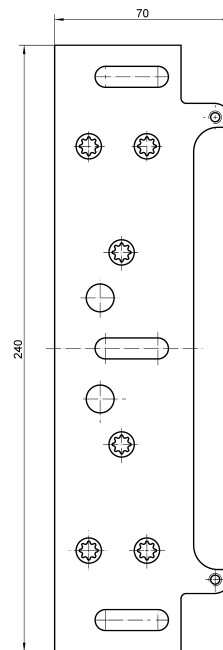
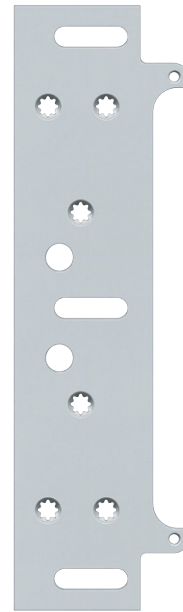
**Combination**

magnetic closure	KCM 50
	KCM 50/50

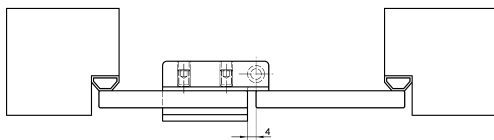
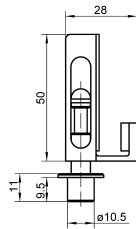
**Note**

In order to prevent warpage of the frame by the magnetic force, a sufficient mechanical fixing must be provided.

Delivery includes packers for casing thicknesses of 22–28 mm.



# TECTUS



## KCM 01

locking system for the passive leaf of glass doors with floor socket and stop at the active leaf

<b>accessories</b>		
--------------------	--	--

### Product features

- for 8–10 mm ESG-glass
- clamp fitting, without drilling the glass

### Technical details

overall length	50.0 mm
width	50.0 mm

### Finishes

Stainless Steel Look (126), RAL 9005 Matte Black (107)

### Note

Please consider DIN reference.



## Adhesive kit KCM

for fixing KCM 50/G

<b>accessories</b>		
--------------------	--	--

### Combination

magnetic closure	KCM 50/G
------------------	----------

### Note

The amount of adhesive is sufficient for at least 10 magnetic plates KC 50/G.



## Cleaning cloth

for cleaning adhesive and clamping surfaces

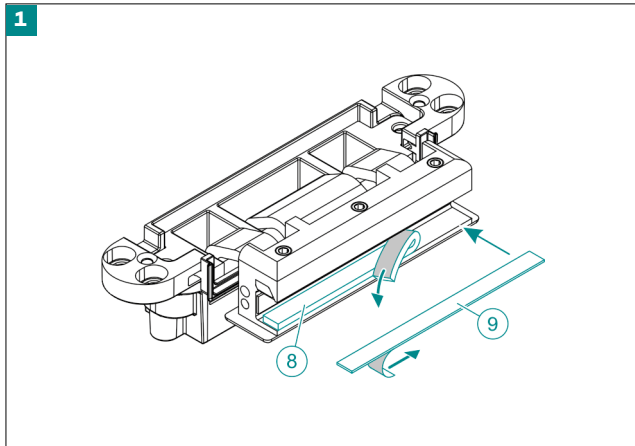
<b>accessories</b>		
--------------------	--	--

### Combination

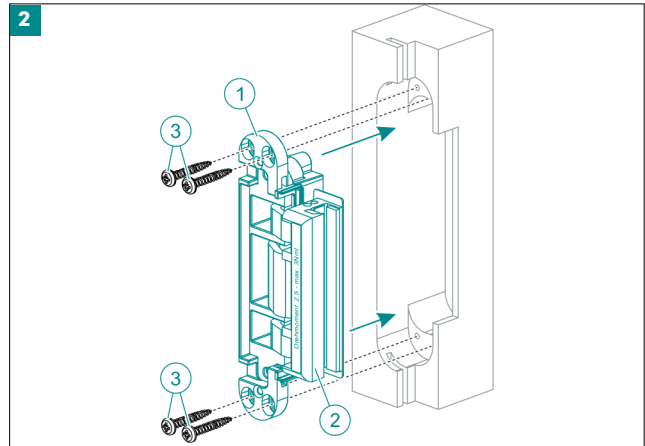
hinge	TEG 310 2D 60
	TEG 310 2D 80
magnetic closure	KCM 50/G

# TECTUS

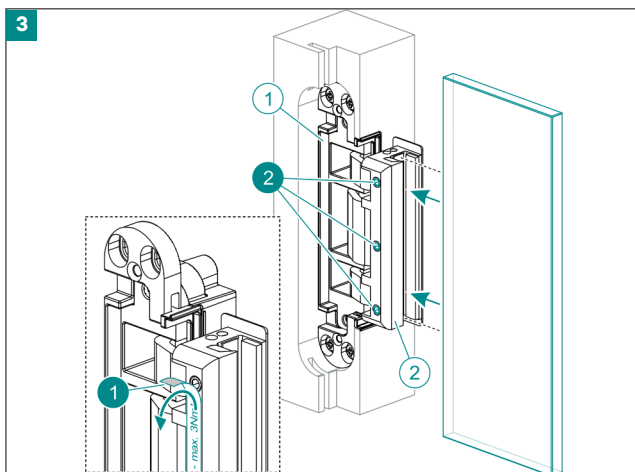
## TEG 310 2D



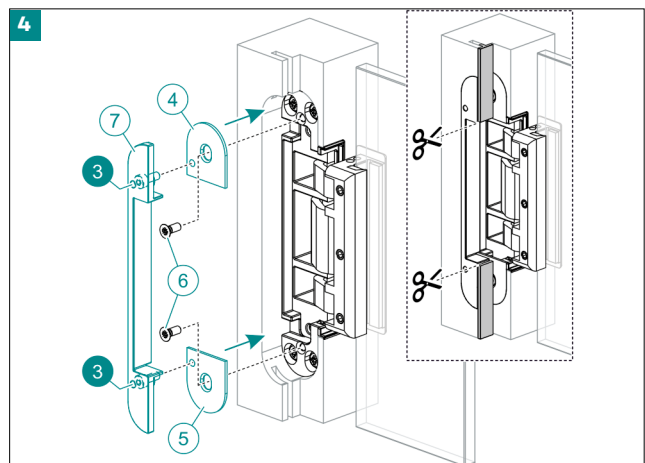
The hinge is pre-assembled for 8 mm thick door leaves. For 10 mm thick door leaves, remove the intermediate layer ⑧ without leaving residue and glue in the intermediate layer ⑨.



Place the hinge frame part ① in the door frame, pre-drill the door frame and fasten the hinge frame part with the four screws ③ (4.5x30 mm).



Remove the sticker ①. The clamping area must be clean and free of grease. Feed the door leaf into the hinge frame part ② as far as it will go, align in height and tighten with the three screws ② (4.5 to 5 Nm). Make sure there is sufficient floor clearance!

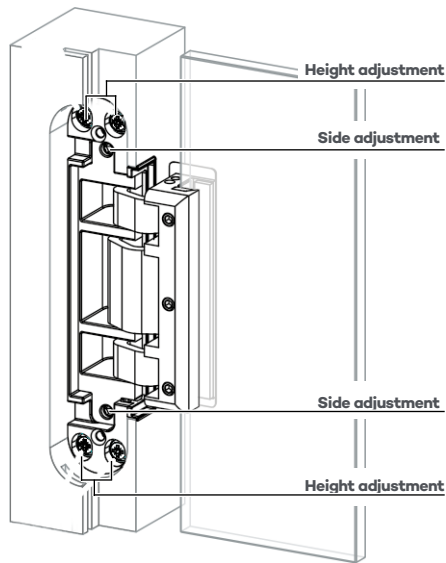


Fasten the cover plates ④ and ⑤ to the hinge with the screws ⑥. Fasten the rebate cover ⑦ with the two screws ③ flush to the frame on the cover plates. Cut the door seal to size.



## TECTUS

### TEG 310 2D



#### Two-dimensionally, continuously adjustable

side	+ 3.0 / - 2.0 mm
height	+/- 1.0 mm

#### Side adjustment

- adjust the adjusting spindles evenly with an Allen wrench

#### Height adjustment

- position wedges under the door
- slightly loosen the clamping screws
- move the door leaf into the correct position
- firmly retighten the clamping screws

#### Note

A further height adjustment is possible by repositioning the door leaf in the clamp. All adjustments to be conducted by means of a 4 mm Allen wrench.

## Service – comprehensive expertise for your daily work

We are happy to provide you with all the documentation you need to determine the most suitable hinge system for your building project. Please contact us: we would be delighted to work with you to choose the best solution – from high-quality standard elements right up to the most complex solutions.

All our brochures and data sheets can be requested in a printed version, or you can simply download them on the spot.

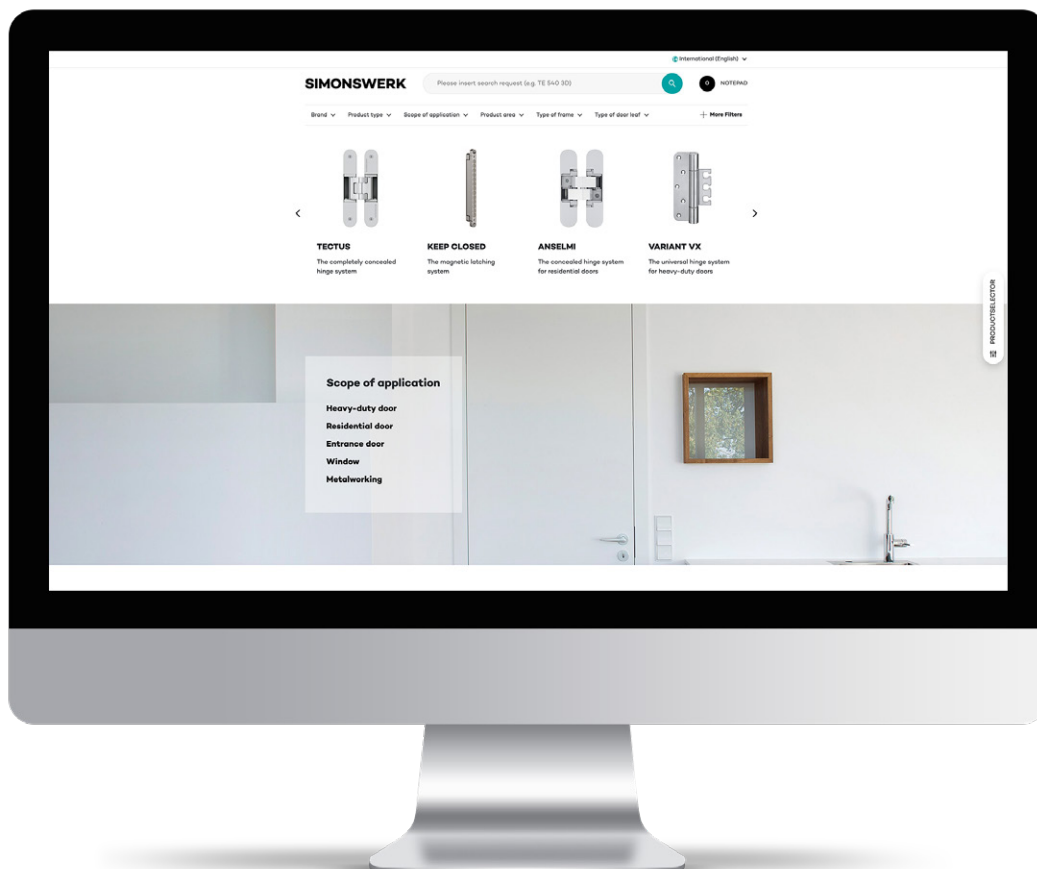
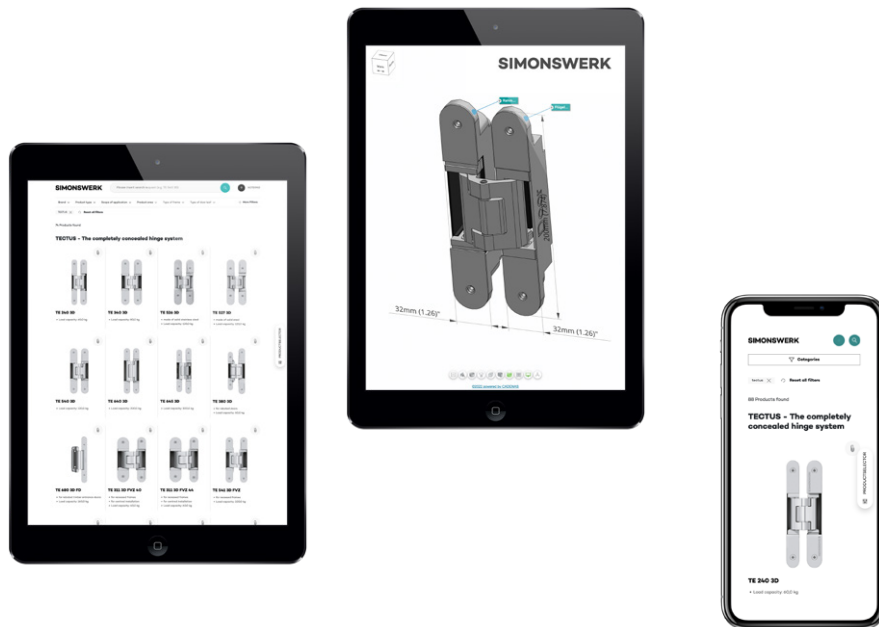
Our friendly and knowledgeable application engineers will be pleased to help you and advise you.

**[www.simonswerk.com](http://www.simonswerk.com)**

**📌 Visit our PRODUCTSELECTOR.**

At [www.simonswerk.com](http://www.simonswerk.com) you will find detailed and precise product descriptions that make it easier for you as a craftsman, trade partner and planner to find a suitable hinge systems.





# SIMONSWERK

## TECTUS Glass

Flush glass doors in the limelight

### SIMONSWERK GmbH

Bosfelder Weg 5  
33378 Rheda-Wiedenbrück  
Germany

+49 5242 4130

info@simonswerk.de

www.simonswerk.com

Member of the

**SIMONSWERK  
GROUP**

© SIMONSWERK GmbH  
07/2024, 5 800556 0 00001/L10  
Subject to technical modifications.

